

Son Ferrandell





With the incredible views and the sparkling Mediterranean sea on the horizon, it is hard not to fall in love with this beautiful estate just outside the picturesque village of Valldemossa, on Mallorca's magnificent west coast.

Nestled in a protective environment of greenery such as olive trees, cypresses, citrus and palm trees, the property overlooks wide valleys facing the Mediterranean sea. Already from afar, the front facade and the two wings can be seen, which underline the large and compact volumes of the architecture. In front of the house there is a gravel field where the greenery is palpable with lushly growing hedges, trees and flowers.





Estate history : Archduke Luis Salvador of Austria

Archduke Luis Salvador of Austria (1847-1915), a lover of culture, Mediterranean and especially the Sierra de Tramuntana, came to Mallorca for the first time in 1867 and was a pioneer in tourism to the Balearic Islands. The Archduke bought the property in 1889 from Mr. Castillo, who had bought it from the Marquises of La Romana. Later, his trips became usual and he became a regular on the Island; as a consequence he acquired a large number of Majorcan estates in Valldemossa and Deià. Son Ferrandell was the second largest possession of Luis Salvador, after Son Moragues, and the most southwestern. The estate lands were the first in Valldemossa that the Archduke set foot in back in 1867 for his first trip to Majorca.

Due to his great interest in the arts, he also became a patron, helping local scientists and artists. The Archduke obtained different recognitions such as being an honorary member of the Imperial Academy of Sciences in Vienna. In the Balearic Islands, he was awarded the Honorary Academician of the Provincial Academy of Fine Arts.













Full property description

With a total living space of a full 2000 square meters and a plot that of 758,000 square meters, the possibilities are great for creating more than a home. In this peaceful and idyllic place, dreams can come true. Maybe a bed and breakfast, café, yoga retreat, a course activity or a farm workshop is on the wish list? At the same time as the calm and peaceful surroundings rest on the farm, it is conveniently close to the lively and idyllic village of Valldemossa.

Stylish entrance

The classic wooden double doors lead into the courtyard with a paved open area adorned with beautiful bougainvillea and flowers. You can already feel uniqueness of the lime walls and the wabi-sabi style of the house, with a clear appreciation of both natural objects and the forces of nature. Behind one of the traditional wooden doors hides a characteristic little chapel with many preserved original details. Within this level, the mallorquin "traditional kitchen" and the old olive press are witness of the organic farming days.

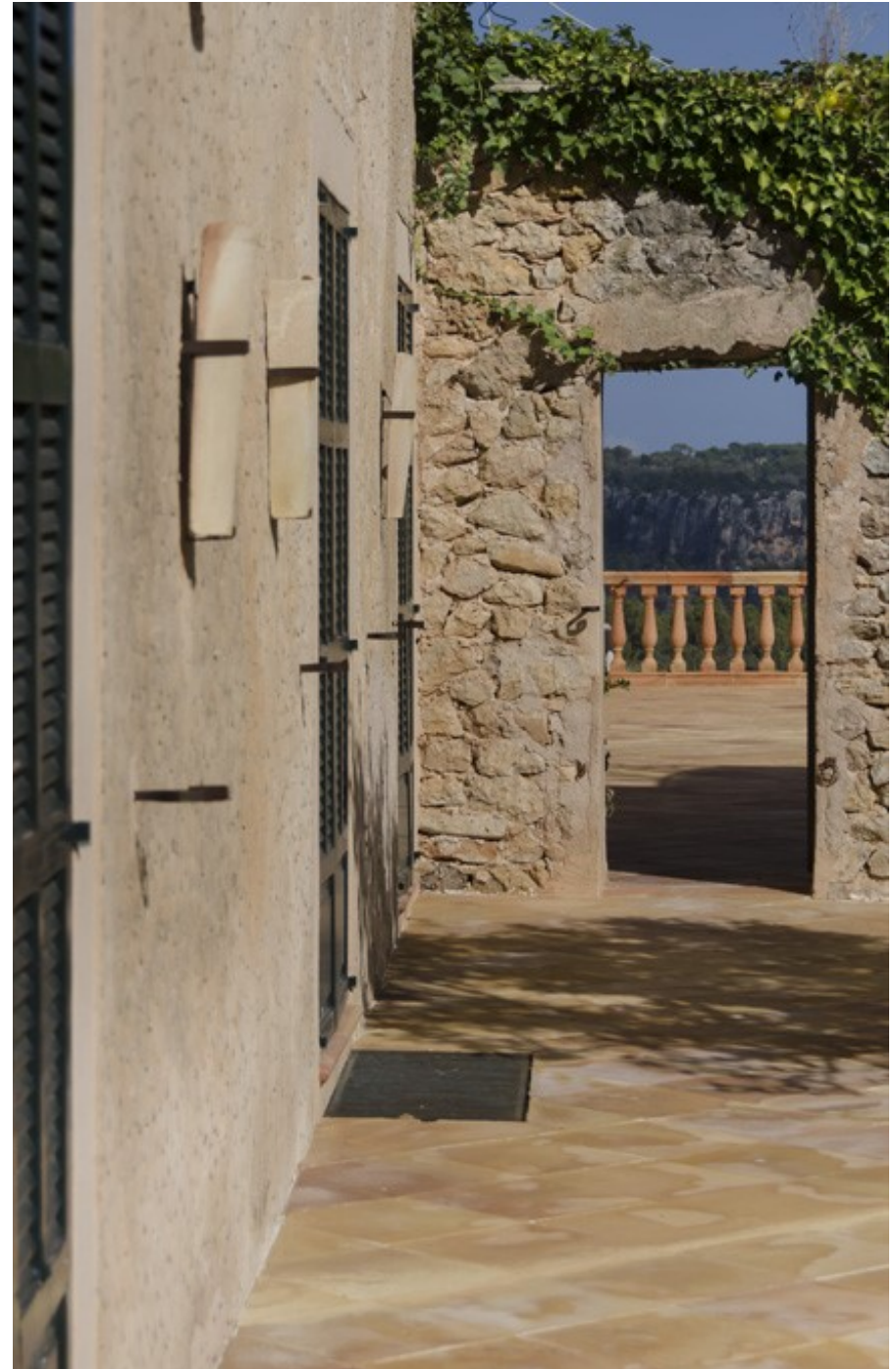
Entrance floor

On the entrance floor, the traditional kitchen with solid oak details in combination with stone and opened area in the kitchen is filled by a wooden dining table that allows dinners for both family and guests. The charm with details from the past such as the fire-place in combination with a fully equipped and furnished kitchen attracts both long cooking and socializing around the large dining table.

The interior of the house is to some extent modernized but in a true-to-the-time spirit that provides a fine balance between past and present.

Gardens, Terraces and surrounding

The farm has tangible greenery with lushly growing hedges, trees and flowers. From the living room's double wooden doors with glass sections, a lush garden with vegetation in the form of plantings and rose bushes is connected. From the patio you can reach another terrace with a view of the mountain peaks and the open landscape.





Inside the Main house of Son Ferrandell























PLANTA BAJA

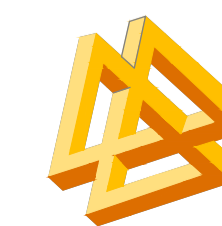
**ESTADO ACTUAL DEL
PREDIO "SON FERRANDELL"**

Emplazamiento: Son Ferrandell - Término Municipal de Valldemossa - Illes Balears
 Peticionario: GEORGE SAND S.A. Referencia: 64/2017
 Plano:

Distribución planta baja.

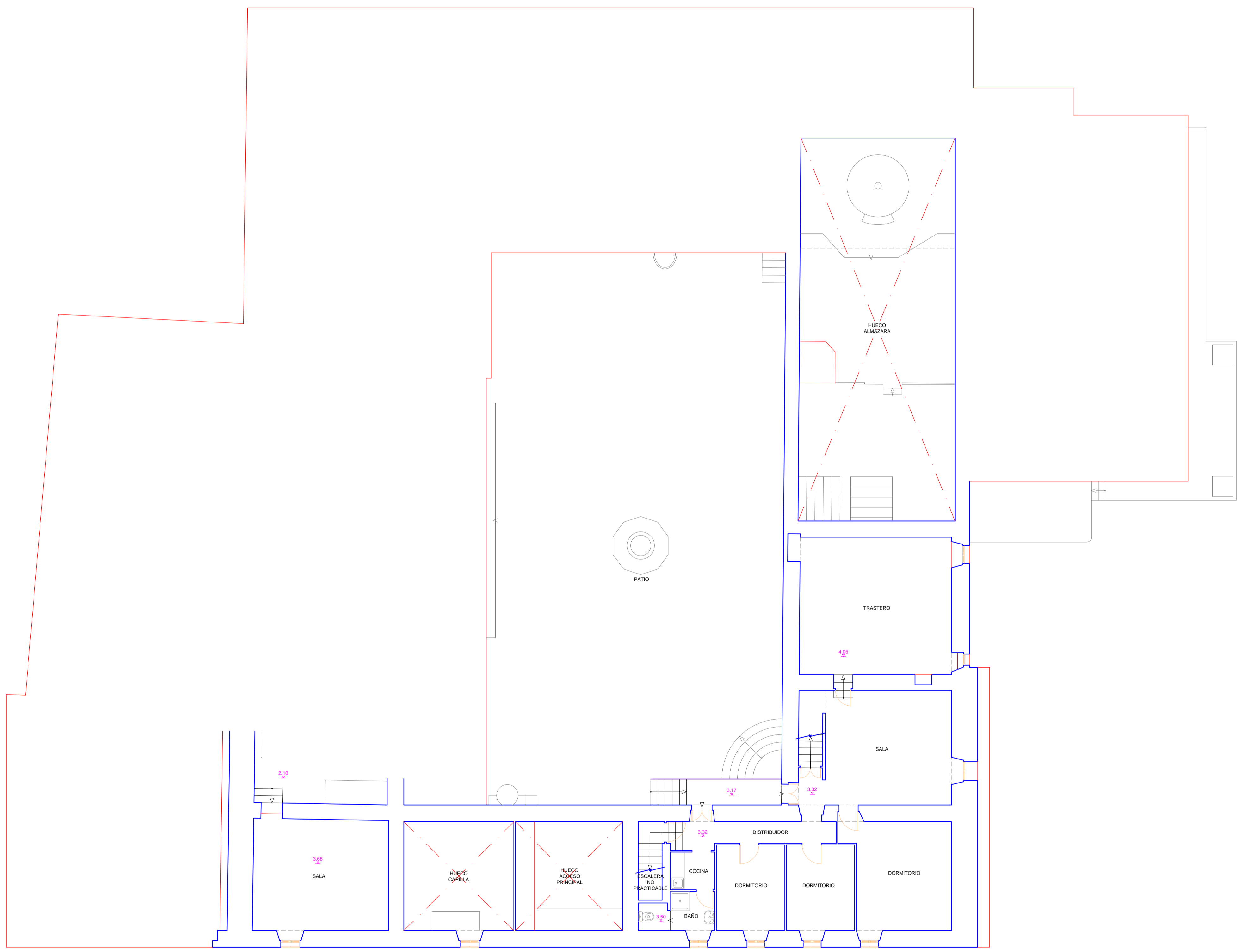
Escala: 1/100

SEPTIEMBRE 2017



PRODICAD Grup
 Gran Via Asima, 4A - 1ª Der. Pla.3 - 07009 Palma
 609 680 748 - contacto@prodicad.es
 www.prodicad.es

Topografía
 Arquitectura
 Ingeniería
 Medioambiente



PLANTA ENTRESUELO

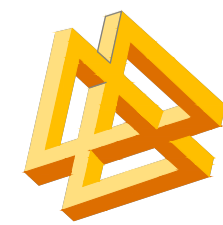
**ESTADO ACTUAL DEL
PREDIO "SON FERRANDELL"**

Emplazamiento: Son Ferrandell - Término Municipal de Valldemossa - Illes Balears
 Peticionario: GEORGE SAND S.A. Referencia: 64/2017
 Plano:

Distribución planta entresuelo.

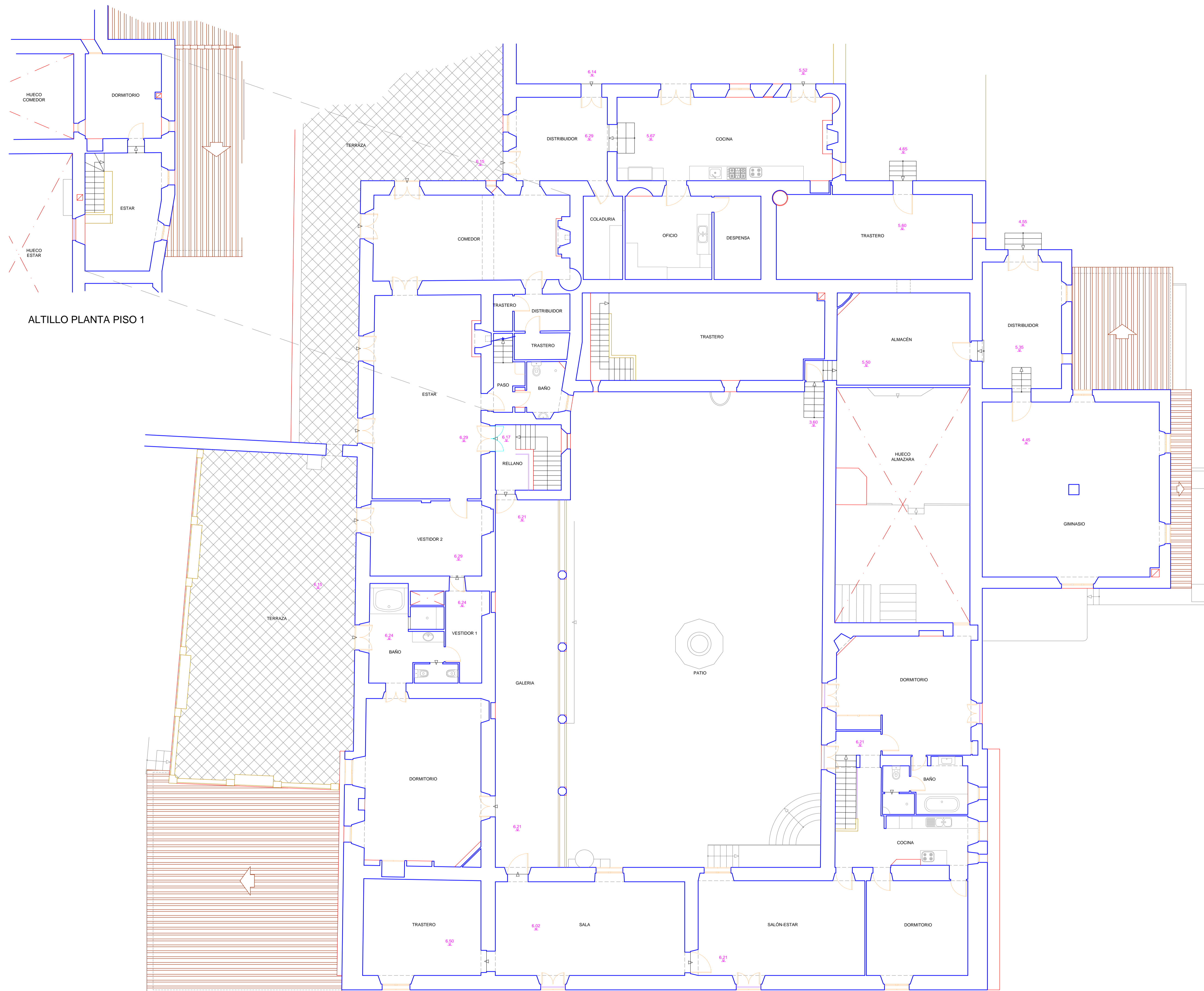
Escala: 1/100

SEPTIEMBRE 2017



PRODICAD Grup
 Gran Via Asima, 4A - 1ª Der. Pla.3 - 07009 Palma
 609 680 748 - contacto@prodicad.es
 www.prodicad.es

Topografía
 Arquitectura
 Ingeniería
 Medioambiente



ALTILLO PLANTA PISO 1

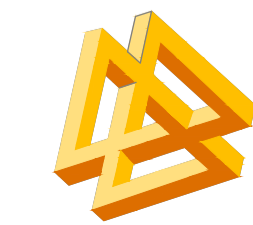
PLANTA PISO 1

**ESTADO ACTUAL DEL
PREDIO "SON FERRANDELL"**

Emplazamiento: Son Ferrandell - Término Municipal de Valldemossa - Illes Balears
 Peticionario: GEORGE SAND S.A. Referencia: 64/2017
 Plano:

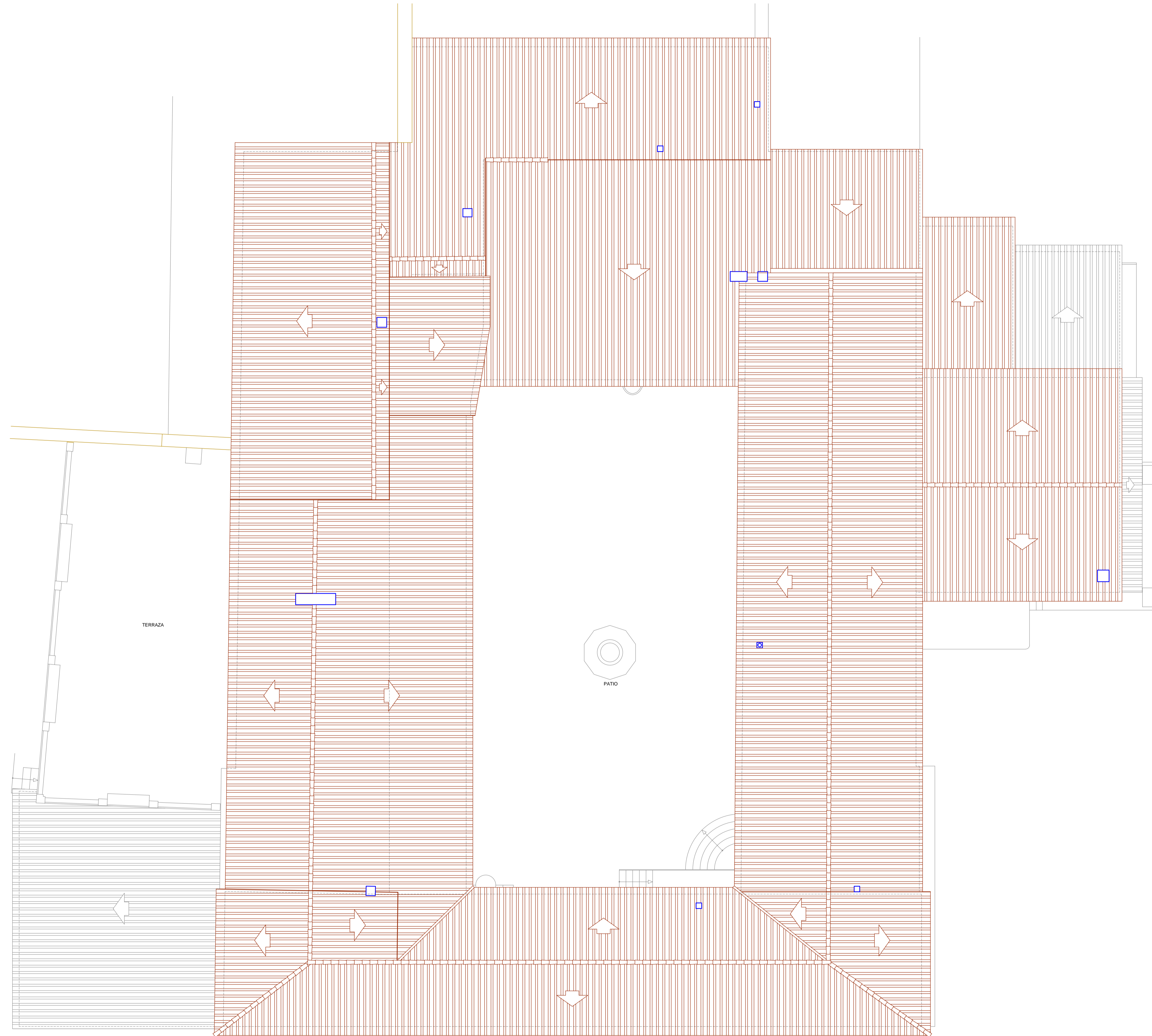
Distribución planta piso 1 y altillo. **4 de ?**

Escala: 1/100 SEPTIEMBRE 2017



PRODICAD Grup
 Gran Via Asima, 4A - 1ª Der. Pla.3 - 07009 Palma
 609 680 748 - contacto@prodicad.es
 www.prodicad.es

Topografía
 Arquitectura
 Ingeniería
 Medioambiente



PLANTA CUBIERTAS

**ESTADO ACTUAL DEL
PREDIO "SON FERRANDELL"**

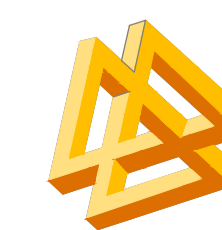
Emplazamiento: Son Ferrandell - Término Municipal de Valldemossa - Illes Balears
 Peticionario: GEORGE SAND S.A. Referencia: 64/2017
 Plano:

Planta cubiertas.

5 de 7

Escala: 1/100

SEPTIEMBRE 2017



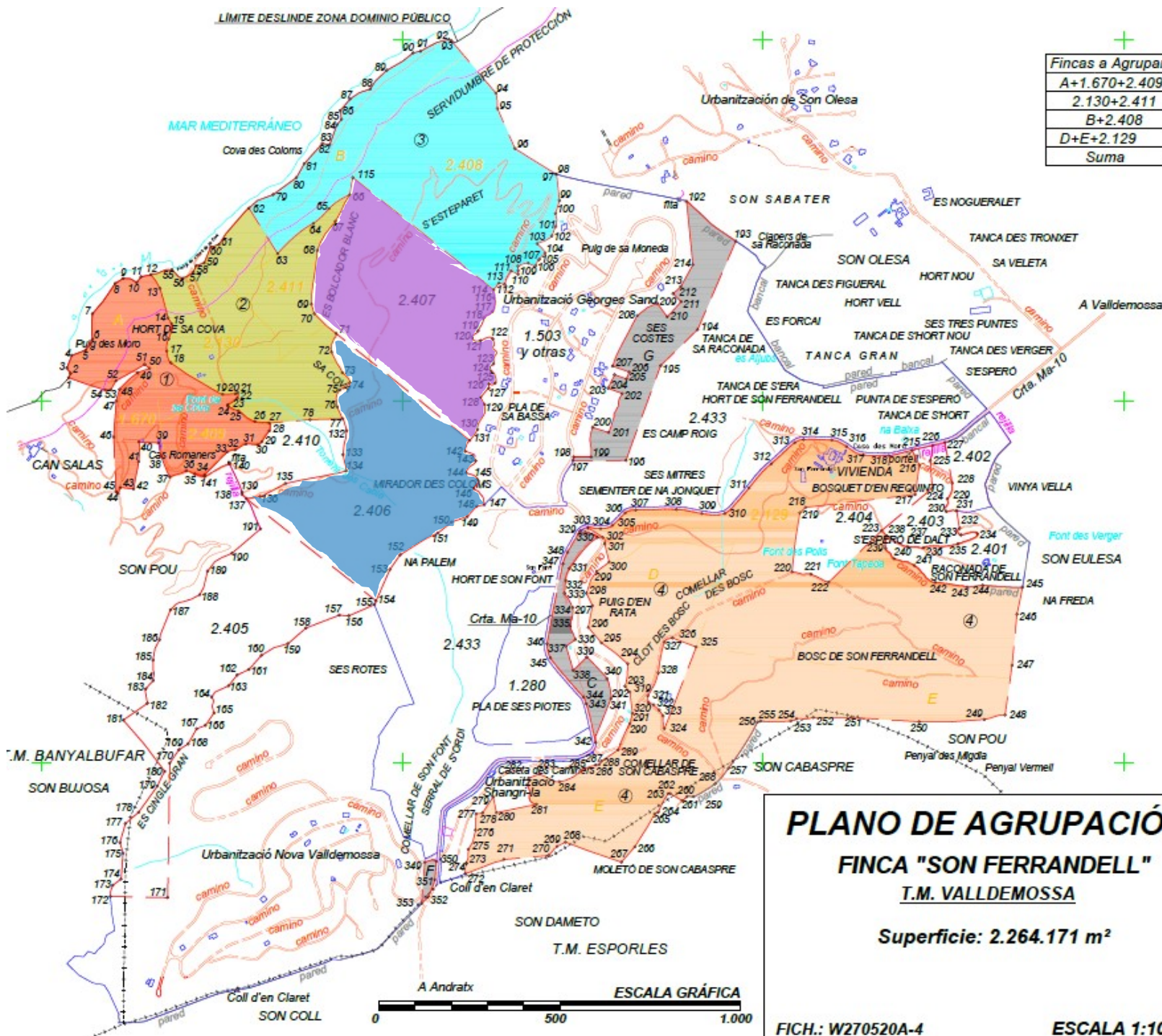
PRODICAD Grup
 Gran Via Asima, 4A - 1ª Der. Pla.3 - 07009 Palma
 609 680 748 - contacto@prodicad.es
 www.prodicad.es

Topografía
 Arquitectura
 Ingeniería
 Medioambiente



Sa Cova

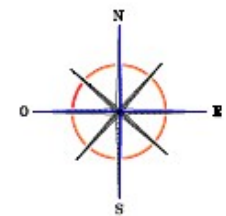
Son Ferrandell



Fincas a Agrupar	Finca Agrupada	Superficie
A+1.670+2.409	1	144.629 m ²
2.130+2.411	2	203.232 m ²
B+2.408	3	286.083 m ²
D+E+2.129	4	758.462 m ²
Suma		1.392.406 m ²

Finca Registral	Superficie
2.403	30.005 m ²
2.404	50.500 m ²
2.405	219.390 m ²
2.406	205.350 m ²
2.407	206.330 m ²
2.410	50.000 m ²
Suma	761.575 m ²

Remanente	Superficie
C	29.463 m ²
F	3.005 m ²
G	77.722 m ²
Suma	110.190 m ²



PLANO DE AGRUPACIÓN
FINCA "SON FERRANDELL"
T.M. VALDEMOSSA
Superficie: 2.264.171 m²

FICH.: W270520A-4

ESCALA 1:10.000

ESTOP
 S.A.
 FOTOGRAFIA-TOPOGRAFIA-PROYECTES

desde 1964 **estop**

Palma, a 29/Octubre/2021
 EL INGENIERO T. AGRÍCOLA

Fda. Albert Canulla Riera

Es Raco de l'Arxiduc





Located on the North coast of Mallorca, and tucked between the Sierra Tramuntana mountain and the sea this private and quiet Spanish villa offers one million square meters and space for up to 6 people. Reflections of the sea through windows filled with breath-taking Mediterranean light will give you inspiration and a relaxed moments

This small traditional farmhouse has been recently refurbished and transformed into one of the island's most authentic and exceptional properties, respecting the traditional Mallorquin style and using local materials and craftsmanship. The interior is all local stone, wood and whitewashed walls.

This beautiful villa has also a spring-fed plunge bath, constantly refreshed by water from the mountains. It is said, by all who tries, it to possess a remarkable ability to revitalize body and soul.

Finca EcoLuxe is a place to truly relax. Listen to the wind in the trees from the sea and the mountains and you will totally fall in love.

Mallorca's most famous adopted son, the Archduke Luis Salvador was first introduced to Valldemossa and Mallorca when stepping ashore at Es Racó (Finca EcoLuxe) in 1867 on his way to Sardinia. He immediately fell in love with it: so much so that he decided to stay, buying Son Ferrandell with Es Racó being the jewel of the property.

Little has changed since the days of the archduke on this part of the island, and we like to keep it that way. Well, almost. As there is still no electricity in the area we are completely self-sufficient with our own solar cells and back-up generator.





3 bedrooms with double beds & AC



3 bathrooms



Direct entrance to a pebble beach



Outdoor kitchen
Indoor kitchen



Plunge pool with fresh spring water



1 million m² property surrounded by mountains



Master bedroom
bathtub & AC



Second bedroom in the main house
& AC





Bathroom in the main house





Cottage Bedroom
& AC



Outdoor kitchen,
Indoor kitchen,
BBQ-Area







Natural
spring-fed
plunge bath,
(mountain's
springs)

About 4m
deep



Direct access to the pebble beach,
typical beach from this side of the
Sierra Tramuntana mountain range










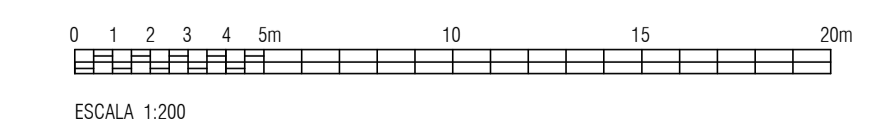
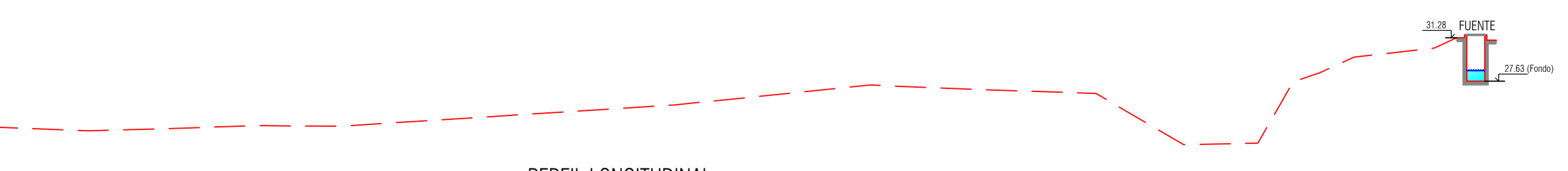
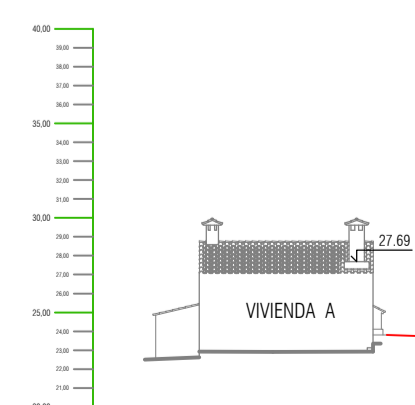
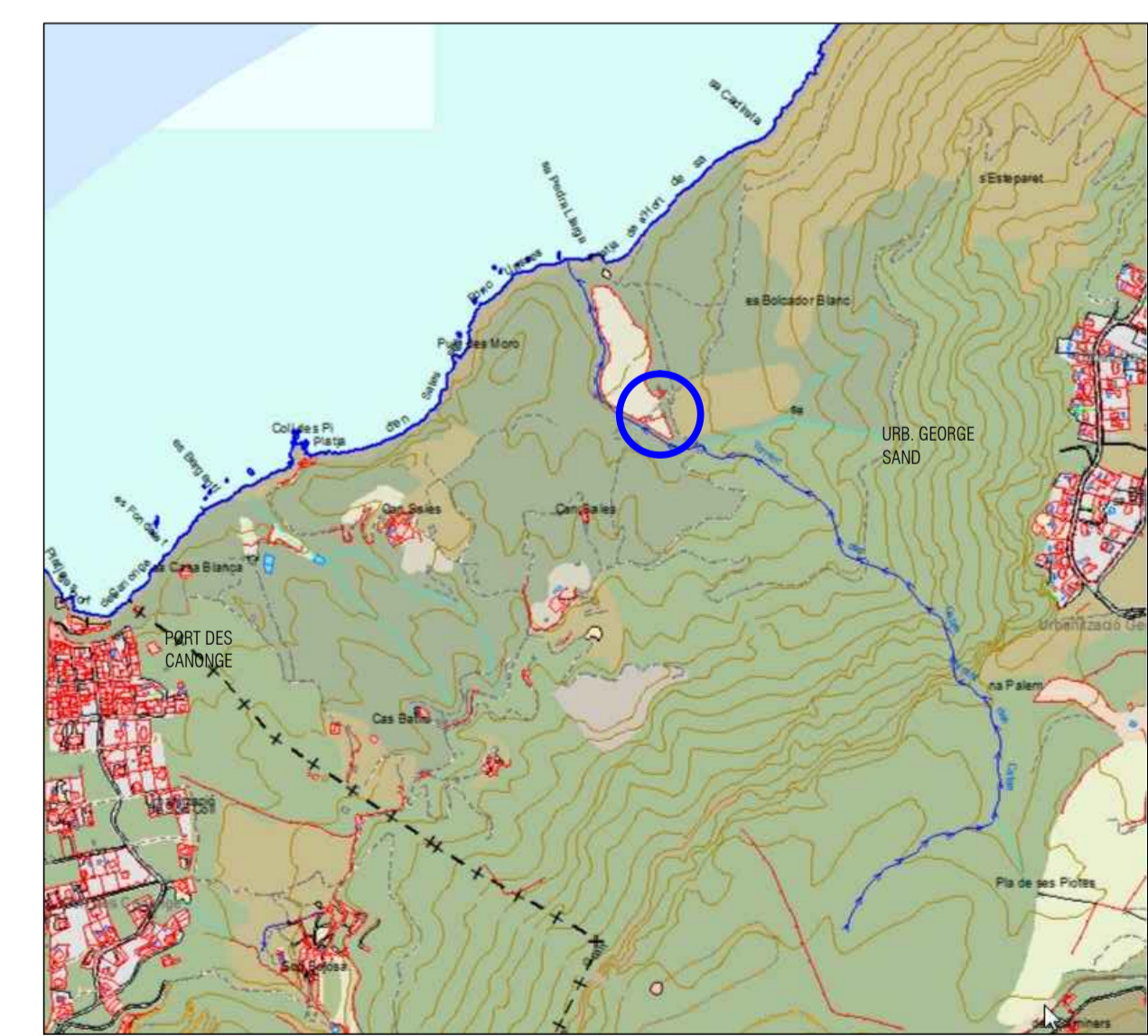
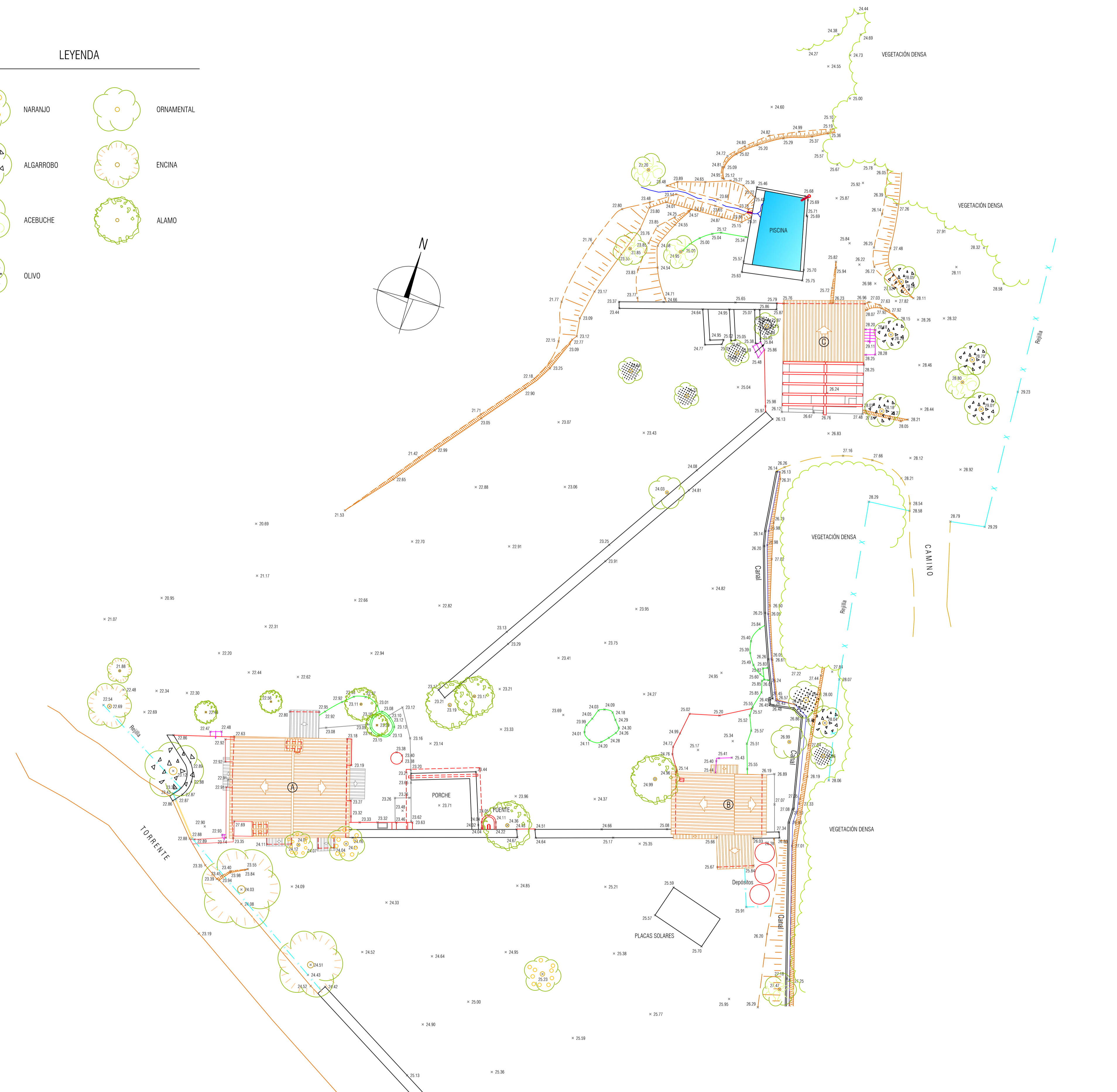
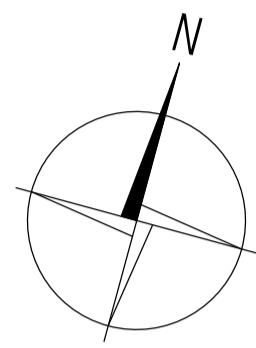






LEYENDA

-  NARANJO
-  ALGARROBO
-  ACEBUCHES
-  OLIVO
-  ORNAMENTAL
-  ENCINA
-  ALAMO



EMPLAZAMIENTO
E:SE

ESTADO ACTUAL DE VARIAS EDIFICACIONES RÚSTICAS

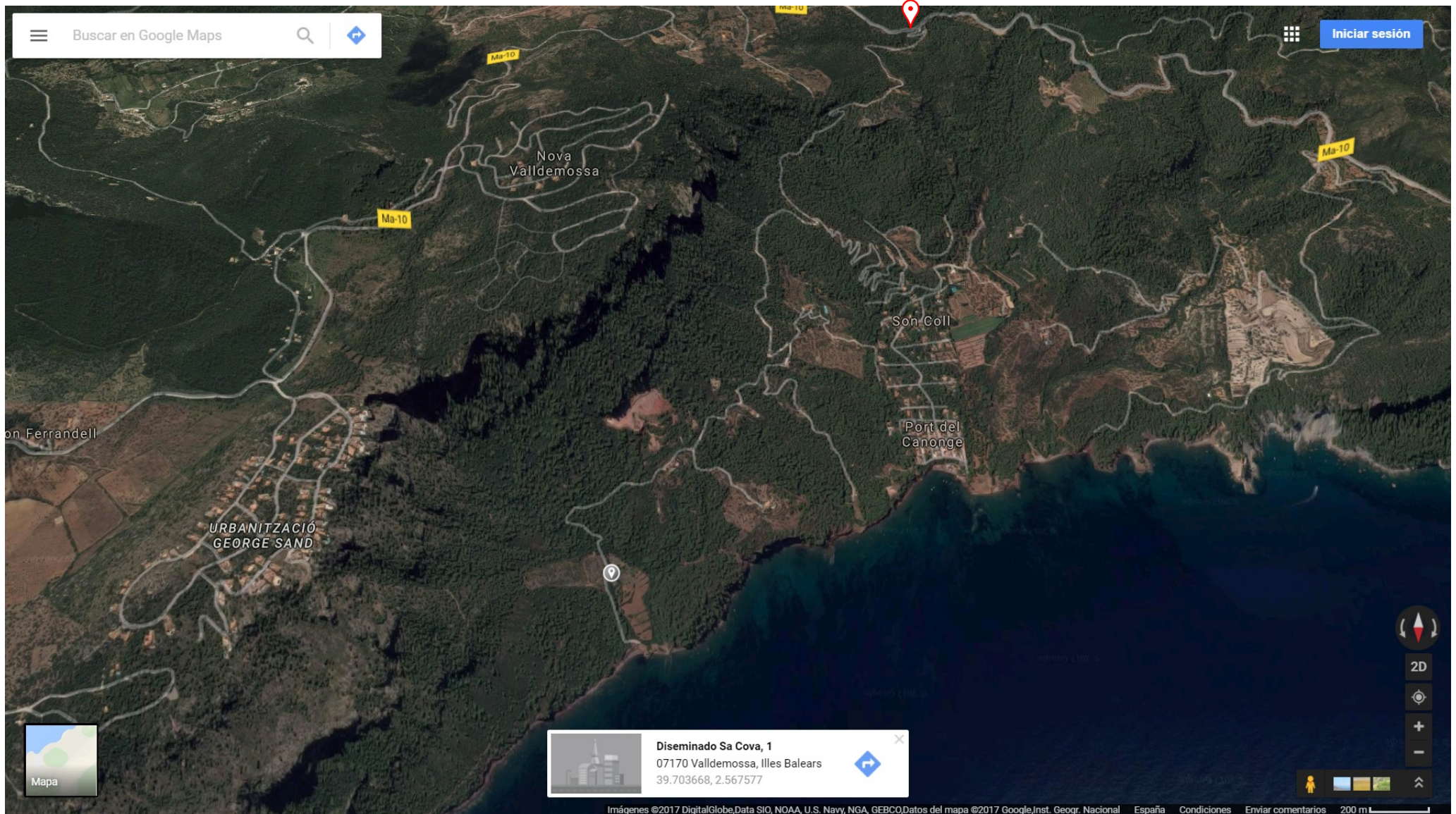
Emplazamiento: Polígono 1 Parcela 163 - "Son Oleza" - T.M. de Valldemossa
 Peticionario: SRA. CRISTINA OLIVER
 Referencia: 4/2016
 Plano: EMPLAZAMIENTO TOPOGRÁFICO ZONA EDIFICACIONES.

Escala: 1/200 FEBRERO 2016



PRODICAD Grup
 Gran Via Asima, 4A - 1ª Der. Pla.3 - 07009 Palma
 609 680 748 - contacto@prodicad.es
 www.prodicad.es

Topografía
 Arquitectura
 Ingeniería
 Medioambiente



Aerial view of the property and roads:

The red pin is the turn to take to follow the path down the second pin, the house itself, "Sa Cova"



Roxane

+34 672 75 60 29

roxane@sonferrandell.com

Office:

+34 871 95 11 32